



 **moviroll**  
 **movicart**

ROLL PUSHERS & CART MOVERS



**renova**  
renova-srl.com  
WE NEVER LOSE CONTROL

**moviroll**  
THE FIRST JUICER YOU WILL LOVE

**ON**  
**OFF**

87%  
**renova**

# moviroll movicart

More productivity, higher safety level

Moviroll roll pushers and Movicart cart movers improve the productivity and increase the safety level as they allow the operator to effortlessly and safely maneuver both large and small cylindrical loads as well as carts. Moviroll and Movicart reduce risks for the operator according to the Technical Standards ISO 11228 "Ergonomics Manual handling".

They are ideal to move paper and tissue rolls, wire and cable reels and drums as well as vehicles and carts, but they are also used to move loads in several other industrial applications.

A wide range of pneumatically and battery operated models plus a variety of optionals and accessories are available, all of them designed, manufactured and assembled on site at Renova.

For this reason we are able to quickly work on customized projects at competitive prices.

Send us your application requirements and we will work with you to find the model that suits your needs.

Click on the "play" icons in this catalog and see demonstration videos!





**BATTERY  
DRIVEN MODELS**



# LITHIUM BATTERY

We have always equipped our battery driven models with the highest quality lithium batteries. By this, we have been able to provide the highest performance systems with the longest running time respecting the environment and safeguarding the health of the operator. We offer different designs and voltage according to the Moviroll or Movicart model.



## LONG LASTING CHARGE

60-120 loads handling with only one battery charge (3-5 working shifts)

## RAPID BATTERY RECHARGE

max 4 hours required for full recharge

## LONG LIFE BATTERY

about 500 recharges

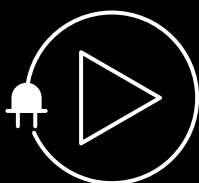
## 2 YEAR BATTERY WARRANTY



Battery charger provided

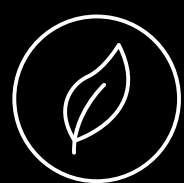
## PLUG & PLAY

Quick battery changes in less than 10 seconds.



## ECO-FRIENDLY

Completely free of any polluting substance, safe for the operator and the environment



# BATTERY ROLL PUSHERS

Battery roll pushers offer the advantage of free movement without the constraints of the pneumatic connections or electrical cables.

They are equipped with 24 V DC IP 44 or 48 V DC IP 44 brushless motor powered by high performance and plug&play 24 V or 48 V lithium battery.





## VARIABLE SPEED

to suit any operator needs



## FORWARD AND REVERS GEAR

two separated and intuitive buttons shielded from dirt, dust and water



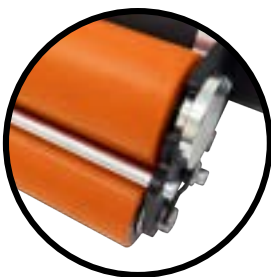
## CHARGER STATUS INDICATOR

easily see when the battery needs to be recharged



## ON/OFF SWITCH

it preserves the battery charge without the need of removing the battery from the system



## CUT FRAMES

for an easy removal of the roller and roller bearings

## OVERSIZED WHEELS

to easily overcome any obstacles along the way

PAPER



# MRE

MRE allows the operator to move rolls on a flat surface and place them on the shuttle cart. Available with straight handle or curved handle 'S'.



model	thrust force	lift force	max rolls diameter	motor	battery	max speed	unit weight
MRE 100 MRE 100 S	26450 lb	6650 lb	83"	24 V DC IP 44	lithium 24 V	42 ft/min	99 lb
MRE 200 MRE 200 S	35300 lb	8850 lb	83"	24 V DC IP 44	lithium 24 V	33 ft/min	99 lb
MRE 300 MRE 300 S	44100 lb	11000 lb	83"	24 V DC IP 44	lithium 24 V	26 ft/min	99 lb

# MRE XS

## SUPER COMPACT DESIGN

MRE XS is compact and handy but heavy duty at the same time. It is the best solution when the need of separating two rolls arises. The handle can be mounted at two heights from the ground, 33.5" or 36".



model	thrust force	lift force	max rolls diameter	motor	battery	max speed	unit weight
MRE 100 XS	26450 lbs	6650 lb	83"	48 V DC IP 44 brushless	lithium 48 V	42 ft/min	66 lb
MRE 200 XS	35300 lbs	8850 lb	83"	48 V DC IP 44 brushless	lithium 48 V	30 ft/min	66 lb
MRE 300 XS	44100 lbs	11000 lb	83"	48 V DC IP 44 brushless	lithium 48 V	23 m/min	66 lb

TISSUE PAPER



# MRE LPT

MRE LPT is equipped with an OVERSIZED ROLLER especially designed to handle soft material rolls and to prevent roll damages.



model	thrust force	lift force	max rolls diameter	motor	battery	max speed	unit weight
MRE 100 LPT	26450 lb	6650 lb	178"	24 V DC IP 44	lithium 24 V	42 ft/min	79 lb
MRE 200 LPT	35300 lb	8850 lb	178"	24 V DC IP 44	lithium 24 V	31 ft/min	79 lb
MRE 300 LPT	44100 lb	11000 lb	178"	24 V DC IP 44	lithium 24 V	24.5 ft/min	79 lb

# MRE XS LPT

## SUPER COMPACT DESIGN

MRE XS LPT is compact and handy but heavy duty at the same time. The handle can be mounted at two heights from the ground, 33.5" or 36". It is equipped with an OVERSIZED ROLLER to handle soft material rolls and to prevent roll damages.



model	thrust force	lift force	max rolls diameter	motor	battery	max speed	unit weight
MRE 100 XS LPT	26450 lb	6650 lb	83"	48 V DC IP 44 brushless	lithium 48 V	42 ft/min	66 lb
MRE 200 XS LPT	35300 lb	8850 lb	83"	48 V DC IP 44 brushless	lithium 48 V	29.5 ft/min	66 lb
MRE 300 XS LPT	44100 lb	11000 lb	83"	48 V DC IP 44 brushless	lithium 48 V	23 m/min	66 lb



# MRE L

MRE L is equipped with a TILTING HANDLE: when the working space is limited, the operator can work alongside the load needing only to turn the handle and “pull” the load instead of thrusting it.



model	thrust force	max rolls diameter	motor	battery	max speed	unit weight
MRE 100 L	33100 lb	178"	24 V DC IP 44	lithium 24 V	16 ft/min	79 lb
MRE 200 L	44100 lb	178"	24 V DC IP 44	lithium 24 V	13 ft/min	79 lb
MRE 300 L	66100 lb	178"	24 V DC IP 44	lithium 24 V	8 ft/min	79 lb
MRE 500 L	110200 lb	236"	24 V DC IP 44	lithium 24 V	10 ft/min	110 lb

# MRE XS L

## SUPER COMPACT DESIGN

MRE XS L is compact and handy but heavy duty at the same time. The handle can be mounted at two heights from the ground, 33.5" or 36".



model	thrust force	max rolls diameter	motor	battery	max speed	unit weight
MRE 100 XS L	66100 lb	114"	48 V DC IP 44 brushless	lithium 48 V	26 ft/min	66 lb
MRE 200 XS L	77100 lb	114"	48 V DC IP 44 brushless	lithium 48 V	20 ft/min	66 lb
MRE 300 XS L	88100 lb	114"	48 V DC IP 44 brushless	lithium 48 V	13 ft/min	66 lb





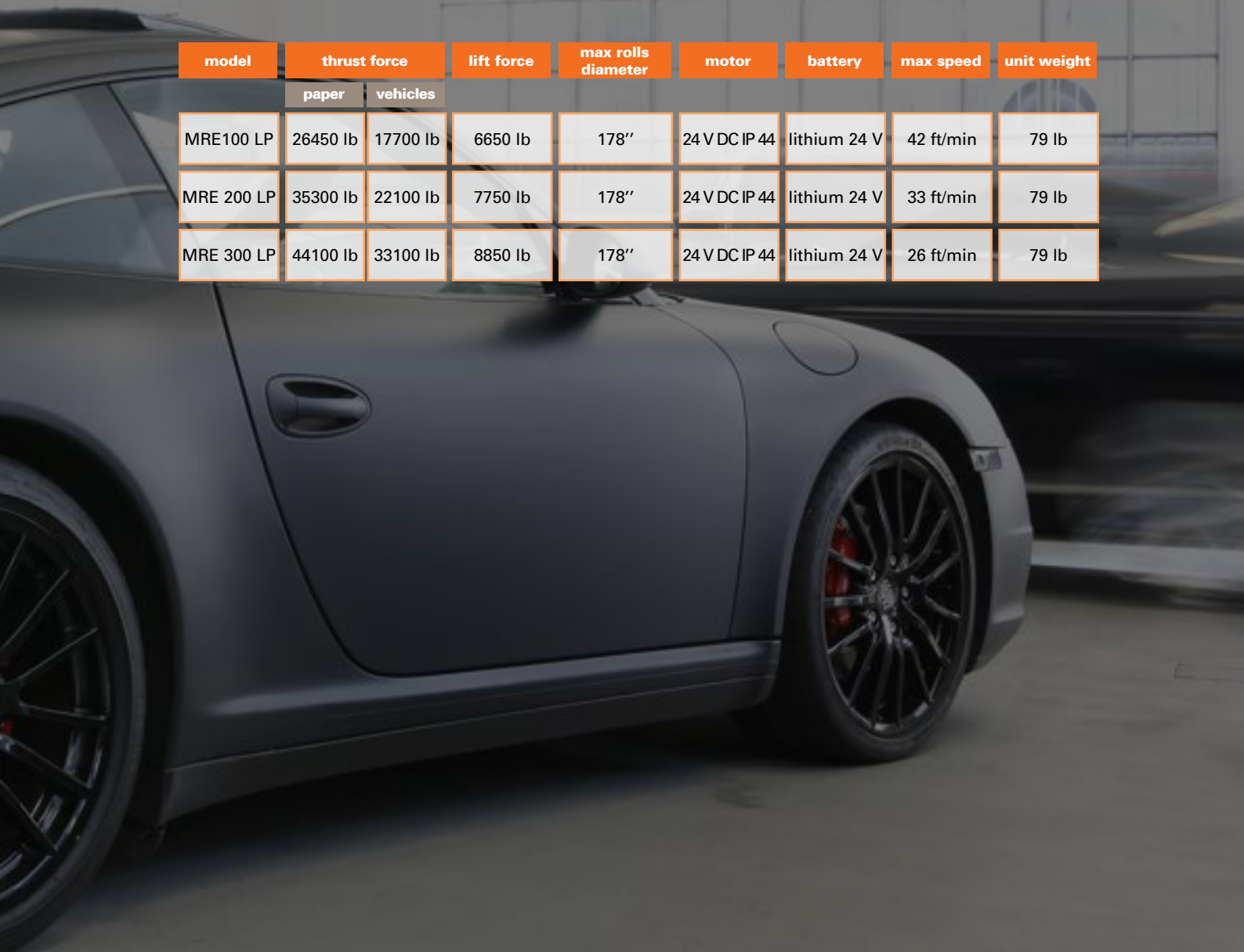


# MRE LP

MRE LP is designed for special applications both in the paper and automotive industries.



model	thrust force		lift force	max rolls diameter	motor	battery	max speed	unit weight
	paper	vehicles						
MRE100 LP	26450 lb	17700 lb	6650 lb	178"	24 V DC IP 44	lithium 24 V	42 ft/min	79 lb
MRE 200 LP	35300 lb	22100 lb	7750 lb	178"	24 V DC IP 44	lithium 24 V	33 ft/min	79 lb
MRE 300 LP	44100 lb	33100 lb	8850 lb	178"	24 V DC IP 44	lithium 24 V	26 ft/min	79 lb



# BATTERY CART MOVERS

Movicart is a compact and handy system designed to safely push or pull your existing carts (both on wheels or rails) without additional effort from the operator, quickly engaging up to 11000 lb thrust force.





### **ON/OFF SWITCH**

to preserve the battery charge

### **UP/DOWN BUTTONS**

cart gripper raising and lowering controls

### **MAX SPEED ADJUSTMENT**

to suit any operator needs

### **FORWARD AND REVERSE GEAR**

### **EMERGENCY STOP BELLY BUTTON**

as a safety precaution, Movicart will reverse direction from backing up to forward if the button hits the operator

### **BATTERY STATUS LEDS**

easily see when the battery needs to be recharged

### **LIFTER**

place the movicart under the cart and then smoothly hook it at the right height

### **OMNIDIRECTIONAL WHEELS**

effortlessly change cart direction

# MCE



**MOVICART** is designed to effortlessly move any cart, on wheels or on rails. Thanks to its various configurations, it can move carts of different sizes, heights and weights.

model	thrust force	lift force	motor	battery	max speed	unit weight
MCE 400	900 lb	55 lb	24 V DC IP 44 brushless	lithium 24 V	100 ft/min	84 lb
MCE 400 E	11000 lb	330 lb	24 V DC IP 44 brushless	lithium 24 V	100 ft/min	84 lb

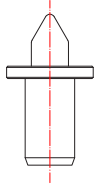


# CONFIGURATIONS



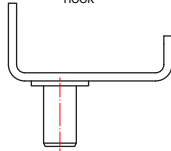
## CART GRIPPERS

MCEP0102



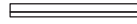
**A**

HOOK



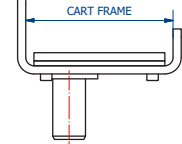
**B**

RUBBER PLATE



**C**

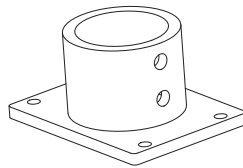
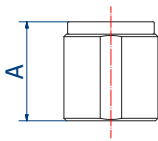
KIT



cart frame (in)	A	B	C
1 - 2	MCEP0068	MCEP0077	MCEP0087
2 - 3	MCEP0070	MCEP0080	MCEP0088
3 - 4,5	MCEP0072	MCEP0083	MCEP0089
4,5 - 6	MCEP0074	MCEP0086	MCEP0090

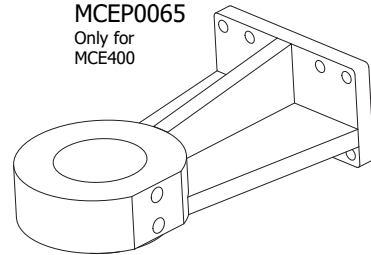
## BUSHINGS

MCEP0016



MCEP0065

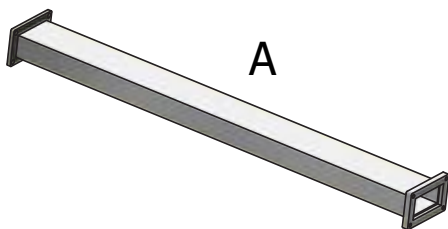
Only for  
MCE400



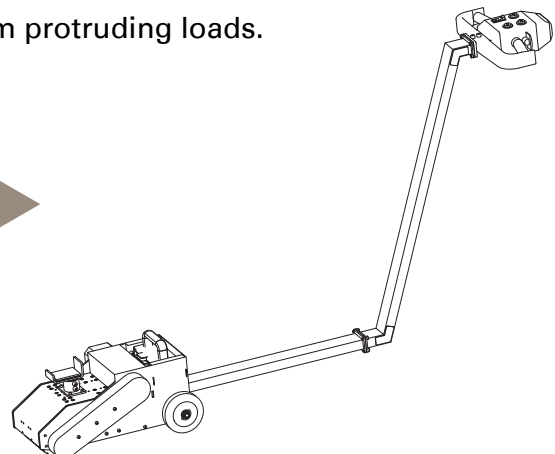
A (in)	1,5	3	4,5	6	7	8,5
code	MCEP0096	MCEP0097	MCEP0098	MCEP0099	MCEP0100	MCEP0101

## HANDLE EXTENSION

Handle extension available to space out from protruding loads.



**A**



A (in)	24
code	MCEP0104



**PNEUMATIC  
DRIVEN MODELS**





Prysmian  
Group

PRYSMIAN  
Brake

# PNEUMATIC ROLL PUSHERS

Pneumatic roll pushers use the power of a high quality pneumatic gear motor powered by pressurized and lubricated air at 87 psi. Pneumatic models are designed to offer the highest performances and to keep them unchanged over time.

All pneumatic models are available with straight handle or curved handle "S".



**POWERFUL MOTOR**



**SAFE ACTIVATION OF ROLLERS**

applied only at the load



**STURDY DESIGN**

compact, handy and heavy duty



# MR MR H



### MR

**MR** is the standard pneumatic model for any type of paper reel. A proper maintenance of the engine with lubricating oil guarantees its correct conservation and performances over time.

### MR H

Twin to the standard version, **MR H** engine doesn't need lubricating oil. This means sustaining the same performances with inferior consumptions and maintenance costs.

model	thrust force		lift force	max rolls diameter	max speed	air pressure	air consumption	unit weight
	paper	vehicles						
MR100 MR100 S	22100 lbs	33100 lbs	5500 lbs	103"	78 ft/min	87-101 psi	7.4 gal/sec	52 lb
MR200 MR200 S	44100 lbs	44100 lbs	11000 lbs	103"	65 ft/min	87-101 psi	10.5 gal/sec	52 lb
MR100 H MR100 SH	22100 lbs	33100 lbs	5500 lbs	103"	65 ft/min	87-101 psi	5.8 l/sec	44 lb
MR200 H MR200 SH	44100 lbs	44100 lbs	11000 lbs	103"	59 ft/min	87-101 psi	9 l/sec	47 lb

# MR L



**MR L** is dedicated to the wire & cable industry. The engine has the same power as MR, but it's been designed with reduced and controlled speed to ensure the operator safety in handling even the largest and heaviest drums.

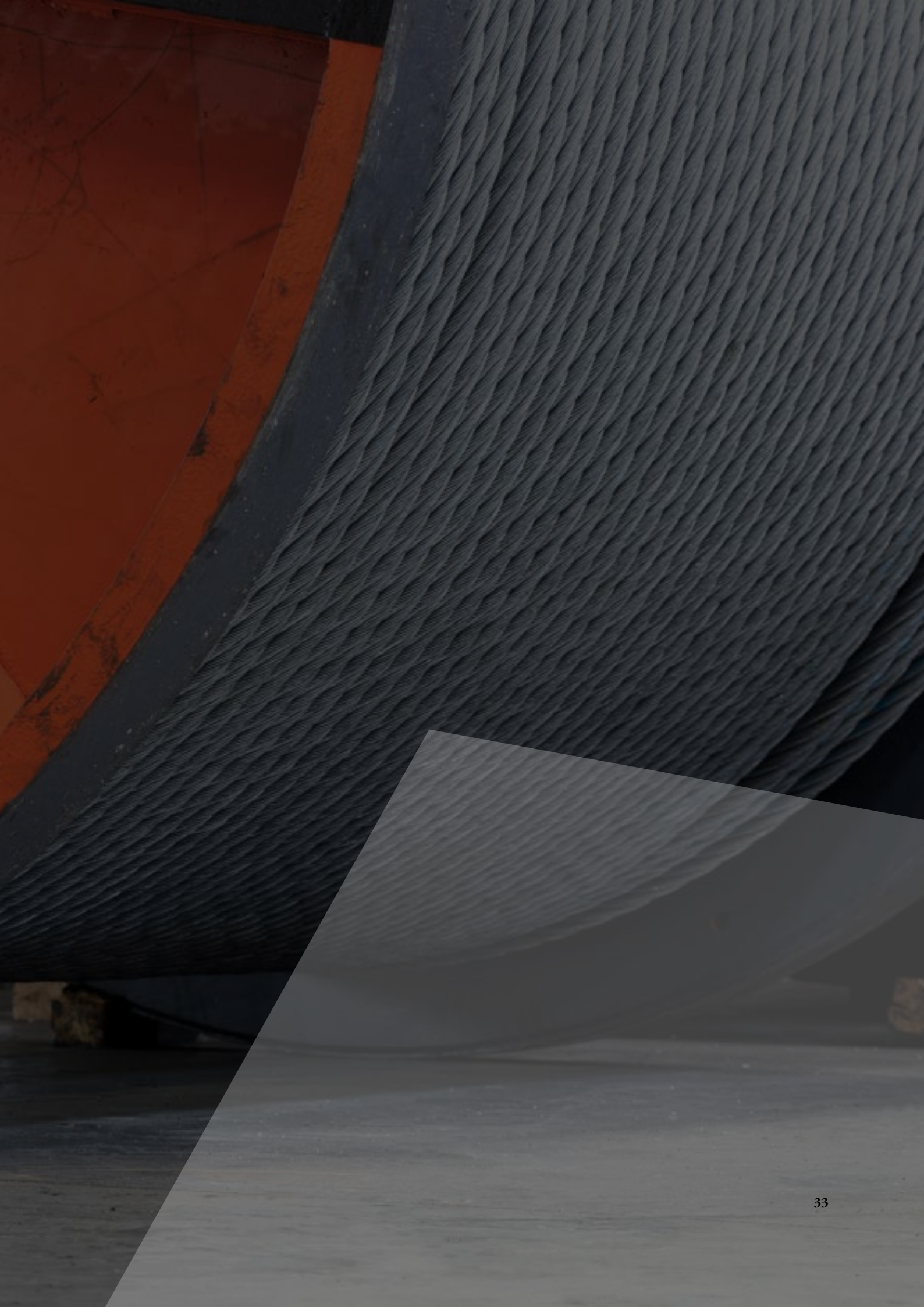
model	thrust force	max rolls diameter	max speed	air pressure	air consumption	unit weight
MR100 L	44100 lb	103"	49 ft/min	87-101 psi	7.4 gal/sec	52 lb
MR100 SL	44100 lb	122"	49 ft/min	87-101 psi	7.4 gal/sec	52 lb
MR200 L	66100 lb	103"	42 ft/min	87-101 psi	10.6 gal/sec	52 lb
MR200 SL	66100 lb	122"	42 ft/min	87-101 psi	10.6 gal/sec	52 lb





# OPTIONALS AND ACCESSORIES



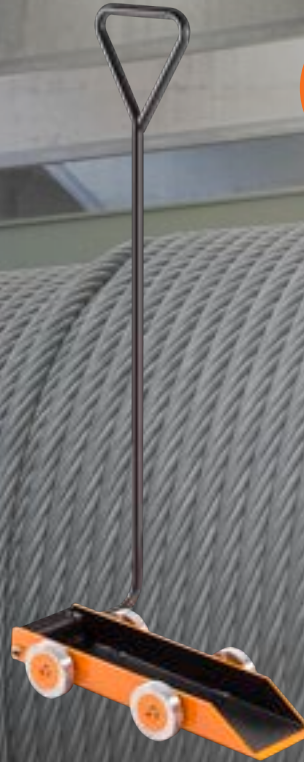




# REEL TURNER

Ideal for rotating or reorientating flanged reels (as wire and cable reels) up to 17600 lb.

CODE: RTS8000



# SAFETY STOP WEDGE

Used as a safety precaution to prevent large rolls from rolling beyond their intended travel.

CODE: WSS8000



# ROTATING PLATE

Allows the operator to safely rotate 360° cylindrical loads without any effort.



model	load capacity	rotation	unit weight	unit dimensions
PRT7000	15400 lb	360°	100 lb	27,5" x 26,5"
PRT2000	4400 lb	360°	77 lb	15,5"x 15"



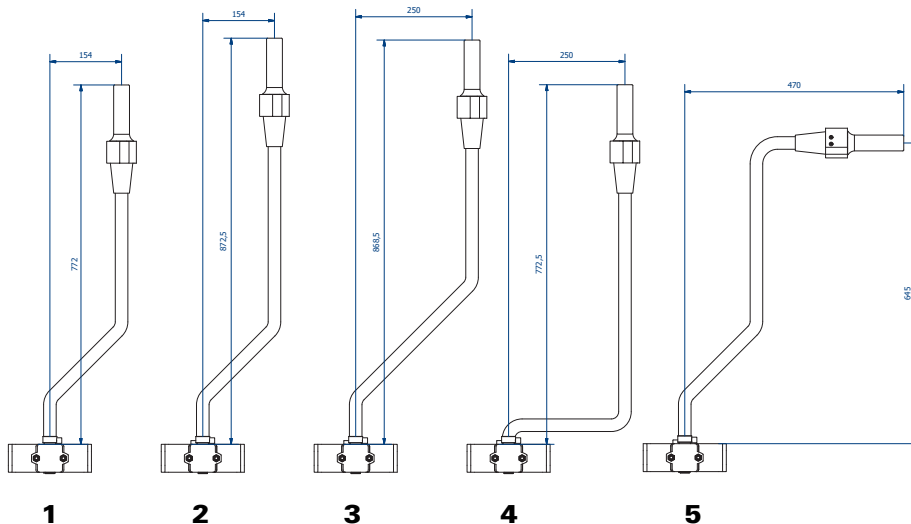
## PLATE

Designed to push reels on shuttle cart into the rollstand area. It can be easily added to the Moviroll MRE only.



## HANDLES

A wide range of different handles are available for all battery driven roll pushers.



## AIR SUPPLY KIT

Only for pneumatic roll pushers.

It is inclusive of:

- spiral pipe
- lubricator filter
- pipe fitting



**CODE: MVRK001**



# PRODUCT SELECTION



# QUESTIONNAIRE



Please fill out the questionnaire, take a picture and send it via email to [sales@cstsystems.com](mailto:sales@cstsystems.com) and [info@renova-srl.com](mailto:info@renova-srl.com)

## CUSTOMER

complete name

position

company

plant

country

tel

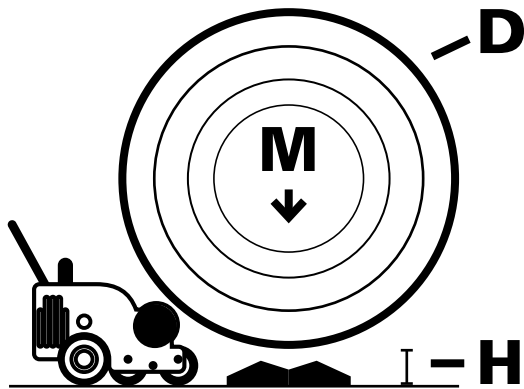
email

model	quantity
-------	----------

**movirol MRE**  
battery roll pusher

**movirol MR**  
pneumatic roll pusher

## PLEASE PROVIDE THE FOLLOWING INFORMATION



**M**  
roll weight

min.	lb	max.	lb
------	----	------	----

**D**  
roll diameter

min.	in	max.	in
------	----	------	----

**H**  
shuttle cart height

in

roll material

- paper
- tissue
- wire & cable
- other

please specify

voltage for battery charger

- 110 V (3-pin plug)
- 220 V (schuko plug)



# QUESTIONNAIRE



Please fill out the questionnaire, take a picture and send it via email to [sales@cstsystems.com](mailto:sales@cstsystems.com) and [info@renova-srl.com](mailto:info@renova-srl.com)

## CUSTOMER

complete name

position

company

plant

country

tel

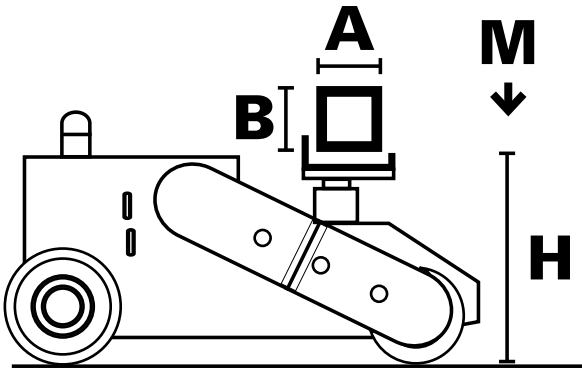
email

model	quantity
-------	----------

movicart MCE 400  
battery cart mover

movicart MCE 400 E  
battery cart mover

## PLEASE PROVIDE THE FOLLOWING INFORMATION



<b>A</b> cart frame		<b>B</b> cart frame	
	in		in
<b>H</b> cart frame height from floor			
min.	in		
<b>M</b> cart weight			
min.	lb	max.	lb

binding condition for a proper use of movicart

- absence of step on the floor
- cart equipped with 2 fixed wheels and 2 pivoting wheels

voltage for battery charger

- 110 V (3-pin plug)
- 220 V (schuko plug)





**MADE IN ITALY**  
Our products are 100% designed and made in Italy



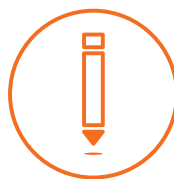
**INNOVATION**  
We provide solutions that increase the productivity and the safety level while reducing maintenance costs and procedures



**SUPPORT**  
Our staff is always available to answer your questions also in the after sales phase



**QUALITY**  
All Renova's products are managed by TUV ISO 9001



**CUSTOM PROJECTS**  
Project large or small, we work with you to provide the solution that fits



**SUSTAINABILITY**  
Sustainable products, sustainable company. Renova has joined Erion



**renova**  
WE NEVER LOSE CONTROL

# CST Systems

Do you know what's possible?

CST is the exclusive US Distributor for Renova products  
1590 N Roberts Rd #201, 30144 Kennesaw, GA - USA  
sales@cstsystems.net | www.cstsystems.net



**renova srl**

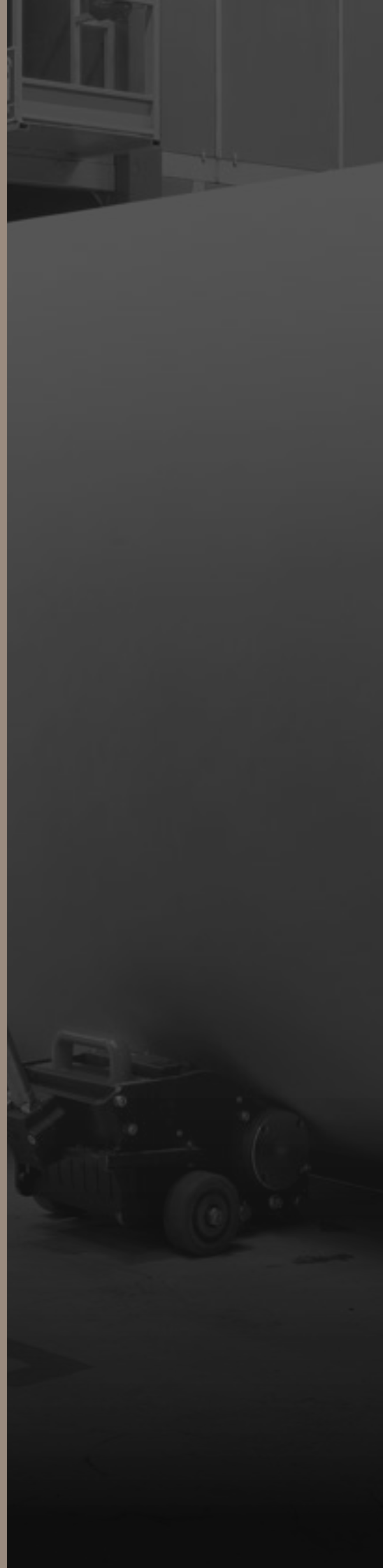
viale rimembranze 93  
20099 sesto san giovanni  
milano - Italy

t +39 0227007394

f +39 0225708635

m info@renova-srl.com

[www.renova-srl.com](http://www.renova-srl.com)





 **moviroll**  
 **movicart**

ROLL PUSHERS & CART MOVERS